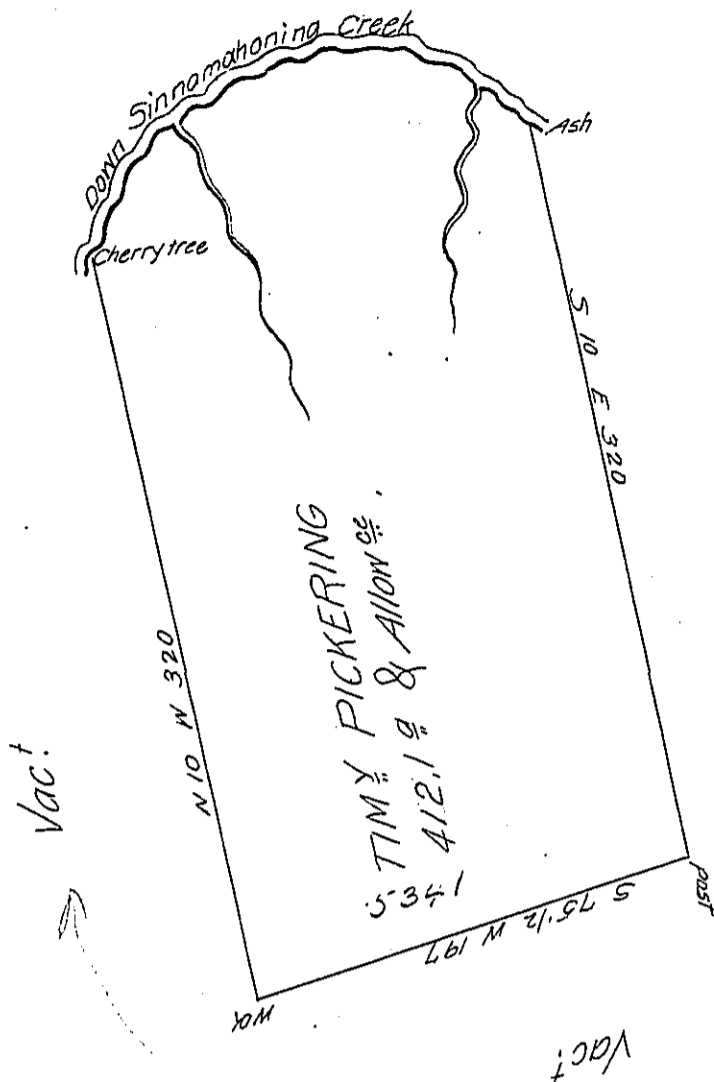


5024

5025



Down Sinna $\frac{9}{10}$ —
 N 32 E 64
 N 68 E 64
 N 89 E 52
 S 57 E 54
 234

Vac.

50342

Vac.

By Virtue of a Warrant No 57 dated the 17th day of May 1785 to me Directed. Surveyed the 9th day of June 1786 to Timothy Pickering & Company the above Described tract of four Hundred & twelve Acres & one tenth of an Acre & allowance of Six P Cent. Situate on Sinnamahoning Creek, about twenty eight Miles from the mouth of S^d Creek in Northumberland County.

John Lukens Esq^r
 Surveyor General

John Elder Jr. D.S.

IN TESTIMONY that the above is a copy of the original remaining on file in the Department of Internal Affairs of Pennsylvania, made conformably to an Act of Assembly approved the 16th day of February, 1833, I have hereunto set my Hand and caused the Seal of said Department to be affixed at Harrisburg, this ninth day of July 1906

Francis N. Brown
 Secretary of Internal Affairs.